

# RIGGING LOAD CRITERIA AND NOTES

The following defines the acceptable loading criteria applicable to all rigging loads hung from the arena roof structure. Please contact the Engineer of Record with any questions or requests for clarification regarding the information contained herein.

All rigging loads shall be suspended only from those rigging grid framing members (rigging beams, roof truss bottom chords, and segments of supertruss bottom chords) explicitly indicated on the Rigging Load Plans herein. Other framing members such as roof deck, roof beams, roof trusses, and catwalk support beams shall not be used for the support of any rigging loads, unless explicitly identified on the Rigging Load Plans.

Permissible rigging loads are identified in three configurations on the Rigging Load Plans (denoted as "Gantry", "Theater", and "Arena"). "Theater" and "Arena" rigging load configurations are independent and mutually exclusive loading conditions, and may not be combined simultaneously, except as noted below. "Gantry" loads are included in simultaneous combination with either "Theater" or "Arena" rigging loads in the structural design forces for the roof structure, and are intended to provide capacity for future installation of a movable house reduction system.

"Arena" rigging loads shall not be applied in a manner that would exceed the maximum rigging loads identified in the load keys. "Maximum rigging load per member span" represents the maximum total rigging load applied to each individual segment of the rigging grid framing members. "Maximum tributary loads per panel point" represents the maximum rigging load at each panel point (or intersection of rigging grid framing members), including the tributary portion of any rigging loads on rigging grid framing members which frame into the panel point. "Maximum total load on each roof truss" represents the maximum total of all rigging loads applied to each individual roof truss, including the tributary portion of any rigging loads applied to rigging beams which frame into the roof truss.

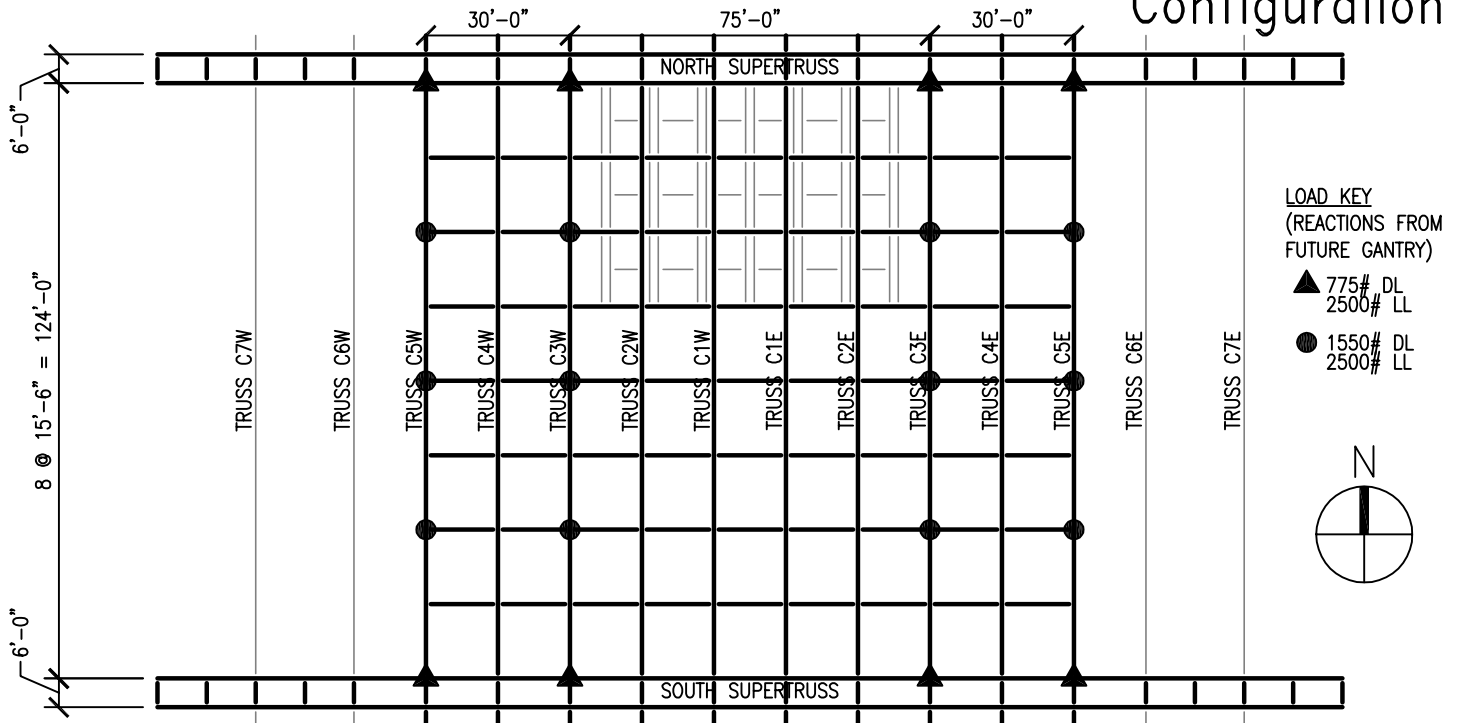
In addition to the rigging load limits specified for each individual framing member and panel point, the total of all rigging loads may not exceed the maximum total specified on the rigging plan.

"Theater" and "Arena" rigging configurations may only be combined with proportional reductions in the capacity of each. For example, one configuration may be combined at 60% of the stated capacity with the other configuration at 40% capacity. Reduction in "Arena" rigging capacity shall not apply to individual rigging grid framing member span or panel point capacities, except in the immediate vicinity of the fly loft area above the stage, as identified on the "Stage" rigging plan.

Bridled rigging loads shall be configured such that the horizontal component of the rigging load is aligned either in the north-south or east-west directions, and has a clear path to resolution. Individual rigging grid framing member span and panel point capacities shall be reduced to 75% of the specified magnitude when the angle of the load is greater than 45° from vertical.

**Note:** Capacity is provided for one 10,000# scoreboard as shown in each endzone of the Arena, in addition to and exclusive of the rigging configurations identified herein.  
Any rigging configuration that is not explicitly identified and described within these Rigging Load Plans shall be analyzed and reviewed by a Professional Engineer registered in the State of Georgia.

## GANTRY Rigging Configuration



**WALTER MOORE**  
STRUCTURAL ENGINEERS

1201 Peachtree St. NE  
400 Colony Square, Suite 1600  
Atlanta, Georgia 30361-3500  
Tel 404.898.9620 Fax 404.898.9659

HOUSTON  
DALLAS  
TAMPA  
ATLANTA  
ORLANDO  
KANSAS CITY  
AUSTIN

Project Name:

**The Arena at Gwinnett**  
Gwinnett County, Georgia

**Rigging Load Plans**

Client:

Rosser International, Inc.

Date:

February 4, 2003

Project No.:

36.00012.00

Client Project No.:

xxxx

Engineer:

DTow

Drafter:

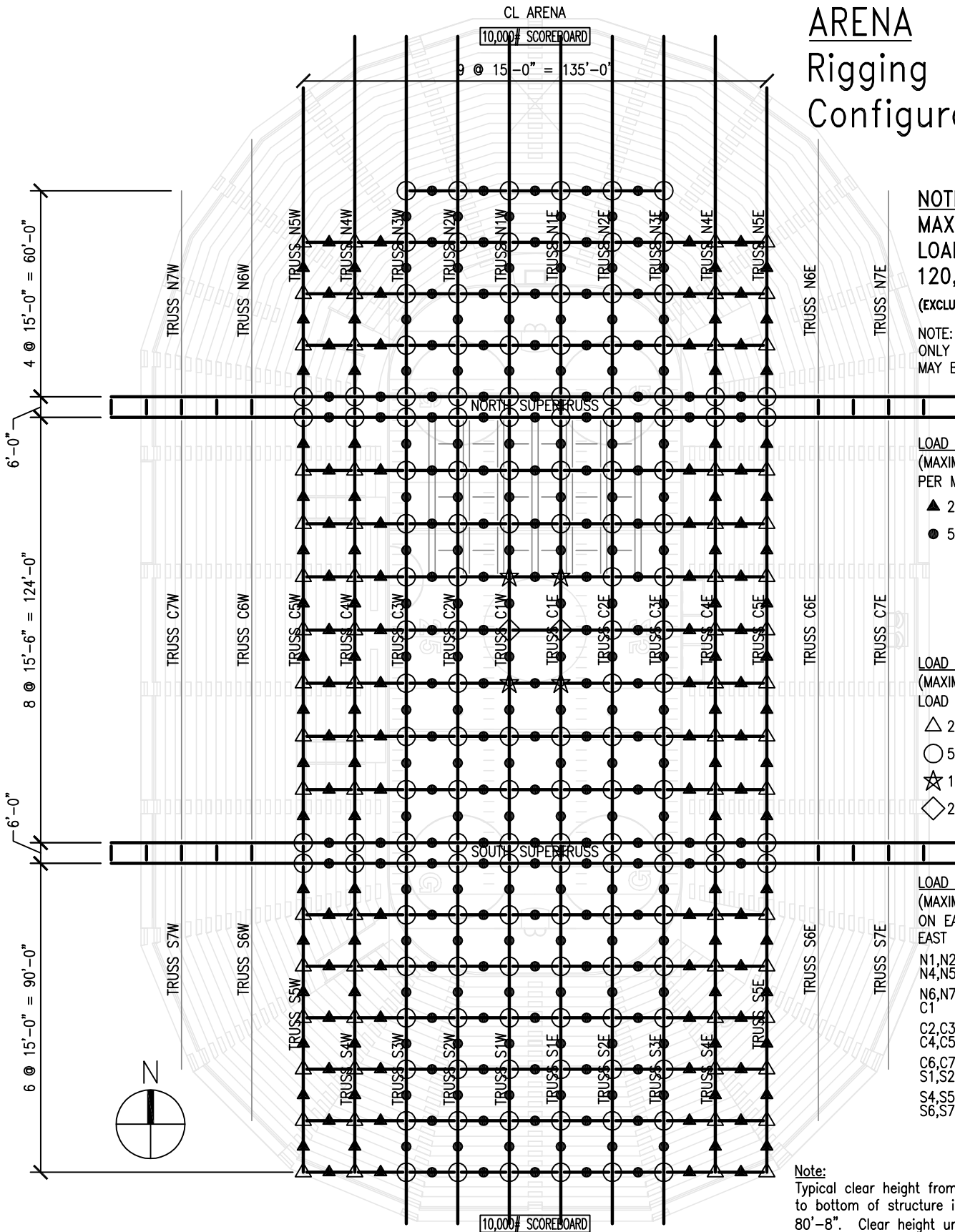
N/A

Sheet:

**Rigging  
Notes**

**Page 1 of 3**

# ARENA Rigging Configuration



**NOTE:**  
MAXIMUM TOTAL  
LOAD ON ROOF  
120,000#  
(EXCLUDING SCOREBOARDS)

**NOTE:**  
ONLY MARKED MEMBERS  
MAY BE LOADED

**LOAD KEY**  
(MAXIMUM LOAD  
PER MEMBER SPAN)  
▲ 2000#  
● 5000#

**LOAD KEY**  
(MAXIMUM TRIBUTARY  
LOAD PER PANEL POINT)  
△ 2000#  
○ 5000#  
☆ 10,000# (@ CTR)  
◇ 20,000# (@ CTR)

**LOAD KEY**  
(MAXIMUM TOTAL LOAD  
ON EACH ROOF TRUSS)  
EAST & WEST SIM  
N1,N2,N3 20,000#  
N4,N5 8000#  
N6,N7 0#  
C1 40,000#  
C2,C3 20,000#  
C4,C5 8000#  
C6,C7 0#  
S1,S2,S3 20,000#  
S4,S5 8000#  
S6,S7 0#

**Note:**  
Typical clear height from event floor slab  
to bottom of structure is approximately  
80'-8". Clear height under supertrusses  
is approximately 70'-1".

**WALTER MOORE**  
STRUCTURAL ENGINEERS

1201 Peachtree St. NE  
400 Colony Square, Suite 1600  
Atlanta, Georgia 30361-3500  
Tel 404.898.9620 Fax 404.898.9659

HOUSTON  
DALLAS  
TAMPA  
ATLANTA  
ORLANDO  
KANSAS CITY  
AUSTIN

Project Name:  
**The Arena at Gwinnett**  
Gwinnett County, Georgia  
**Rigging Load Plans**

Client:  
Rosser International, Inc.

Date:  
February 4, 2003

Project No.:  
36.00012.00

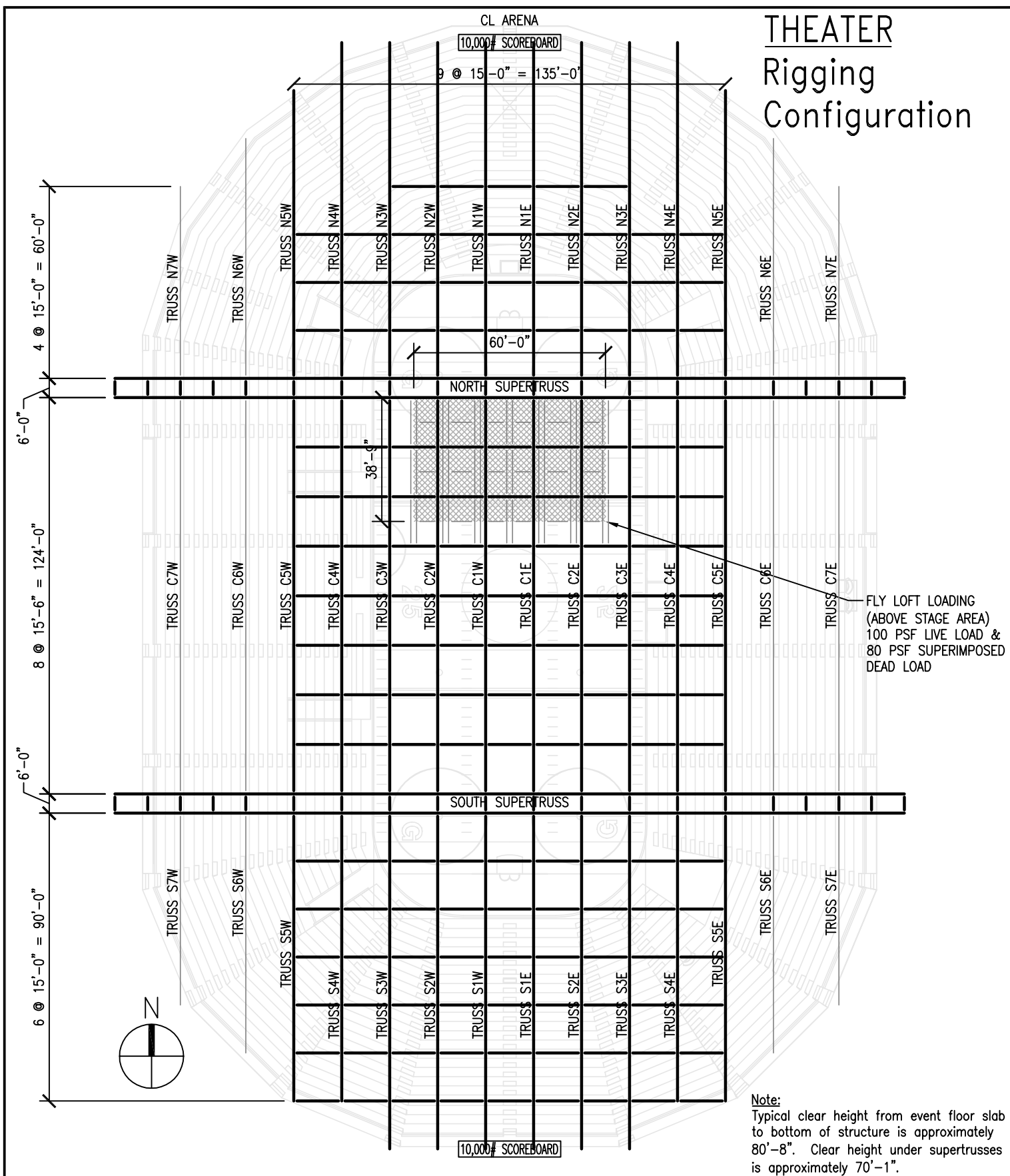
Client Project No.:  
xxxx

Engineer:  
DTow

Drafter:  
N/A

Sheet:  
**Arena Rigging  
Configuration**

Page 2 of 3



**WALTER MOORE**  
STRUCTURAL ENGINEERS

1201 Peachtree St. NE  
400 Colony Square, Suite 1600  
Atlanta, Georgia 30361-3500  
Tel 404.898.9620 Fax 404.898.9659

HOUSTON  
DALLAS  
TAMPA  
ATLANTA  
ORLANDO  
KANSAS CITY  
AUSTIN

Project Name:

**The Arena at Gwinnett**  
Gwinnett County, Georgia

**Rigging Load Plans**

Client:

Rosser International, Inc.

Date:

February 4, 2003

Project No.:

36.00012.00

Client Project No.:

xxxx

Engineer:

DTow

Drafter:

N/A

Sheet:

**Theater Rigging  
Configuration**

**Page 3 of 3**